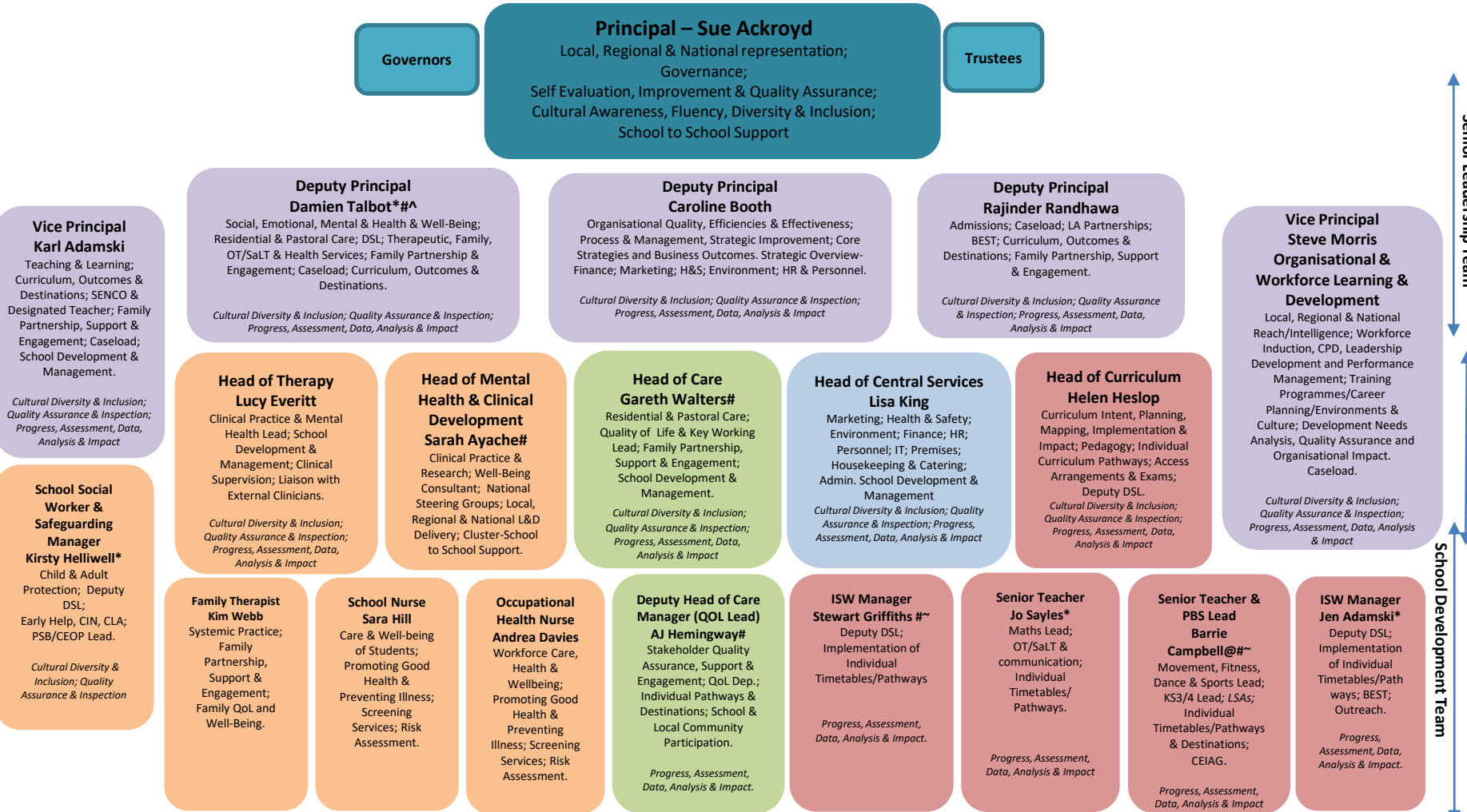


WHSS Structure 01.09.2022/23

Quality of Life and Well-Being



Governors

Principal – Sue Ackroyd
 Local, Regional & National representation;
 Governance;
 Self Evaluation, Improvement & Quality Assurance;
 Cultural Awareness, Fluency, Diversity & Inclusion;
 School to School Support

Trustees

**Deputy Principal
Damien Talbot*##^**
 Social, Emotional, Mental & Health & Well-Being;
 Residential & Pastoral Care; DSL; Therapeutic, Family,
 OT/SaLT & Health Services; Family Partnership &
 Engagement; Caseload; Curriculum, Outcomes &
 Destinations.
*Cultural Diversity & Inclusion; Quality Assurance & Inspection;
 Progress, Assessment, Data, Analysis & Impact*

**Deputy Principal
Caroline Booth**
 Organisational Quality, Efficiencies & Effectiveness;
 Process & Management, Strategic Improvement; Core
 Strategies and Business Outcomes. Strategic Overview-
 Finance; Marketing; H&S; Environment; HR & Personnel.
*Cultural Diversity & Inclusion; Quality Assurance & Inspection;
 Progress, Assessment, Data, Analysis & Impact*

**Deputy Principal
Rajinder Randhawa**
 Admissions; Caseload; LA Partnerships;
 BEST; Curriculum, Outcomes &
 Destinations; Family Partnership, Support
 & Engagement.
*Cultural Diversity & Inclusion; Quality Assurance
 & Inspection; Progress, Assessment, Data,
 Analysis & Impact*

**Vice Principal
Steve Morris
Organisational &
Workforce Learning &
Development**
 Local, Regional & National
 Reach/Intelligence; Workforce
 Induction, CPD, Leadership
 Development and Performance
 Management; Training
 Programmes/Career
 Planning/Environments &
 Culture; Development Needs
 Analysis, Quality Assurance and
 Organisational Impact.
 Caseload.
*Cultural Diversity & Inclusion;
 Quality Assurance & Inspection;
 Progress, Assessment, Data, Analysis
 & Impact*

**Vice Principal
Karl Adamski**
 Teaching & Learning;
 Curriculum, Outcomes &
 Destinations; SENCO &
 Designated Teacher; Family
 Partnership, Support &
 Engagement; Caseload;
 School Development &
 Management.
*Cultural Diversity & Inclusion;
 Quality Assurance & Inspection;
 Progress, Assessment, Data,
 Analysis & Impact*

**Head of Therapy
Lucy Everitt**
 Clinical Practice & Mental
 Health Lead; School
 Development &
 Management; Clinical
 Supervision; Liaison with
 External Clinicians.
*Cultural Diversity & Inclusion;
 Quality Assurance & Inspection;
 Progress, Assessment, Data,
 Analysis & Impact*

**Head of Mental
Health & Clinical
Development
Sarah Ayache#**
 Clinical Practice &
 Research; Well-Being
 Consultant; National
 Steering Groups; Local,
 Regional & National L&D
 Delivery; Cluster-School
 to School Support.
*Cultural Diversity & Inclusion;
 Quality Assurance & Inspection;
 Progress, Assessment, Data,
 Analysis & Impact*

**Head of Care
Gareth Walters#**
 Residential & Pastoral Care;
 Quality of Life & Key Working
 Lead; Family Partnership,
 Support & Engagement;
 School Development &
 Management.
*Cultural Diversity & Inclusion;
 Quality Assurance & Inspection;
 Progress, Assessment, Data,
 Analysis & Impact*

**Head of Central Services
Lisa King**
 Marketing; Health & Safety;
 Environment; Finance; HR;
 Personnel; IT; Premises;
 Housekeeping & Catering;
 Admin. School Development &
 Management
*Cultural Diversity & Inclusion; Quality
 Assurance & Inspection; Progress,
 Assessment, Data, Analysis & Impact*

**Head of Curriculum
Helen Heslop**
 Curriculum Intent, Planning,
 Mapping, Implementation &
 Impact; Pedagogy; Individual
 Curriculum Pathways; Access
 Arrangements & Exams;
 Deputy DSL
*Cultural Diversity & Inclusion;
 Quality Assurance & Inspection;
 Progress, Assessment, Data,
 Analysis & Impact*

**School Social
Worker &
Safeguarding
Manager
Kirsty Helliwell***
 Child & Adult
 Protection; Deputy
 DSL;
 Early Help, CIN, CLA;
 PSB/CEOP Lead.
*Cultural Diversity &
 Inclusion; Quality
 Assurance & Inspection*

**Family Therapist
Kim Webb**
 Systemic Practice;
 Family
 Partnership,
 Support &
 Engagement;
 Family QoL and
 Well-Being.

**School Nurse
Sara Hill**
 Care & Well-being
 of Students;
 Promoting Good
 Health &
 Preventing Illness;
 Screening
 Services; Risk
 Assessment.

**Occupational
Health Nurse
Andrea Davies**
 Workforce Care,
 Health &
 Wellbeing;
 Promoting Good
 Health &
 Preventing
 Illness; Screening
 Services; Risk
 Assessment.

**Deputy Head of Care
Manager (QOL Lead)
AJ Hemingway#**
 Stakeholder Quality
 Assurance, Support &
 Engagement; QoL Dep.;
 Individual Pathways &
 Destinations; School &
 Local Community
 Participation.
*Progress, Assessment,
 Data, Analysis & Impact.*

**ISW Manager
Stewart Griffiths #~**
 Deputy DSL;
 Implementation of
 Individual
 Timetables/Pathways
*Progress, Assessment,
 Data, Analysis & Impact.*

**Senior Teacher
Jo Sayles***
 Maths Lead;
 OT/SaLT &
 communication;
 Individual
 Timetables/
 Pathways.
*Progress, Assessment,
 Data, Analysis & Impact*

**Senior Teacher &
PBS Lead
Barrie
Campbell@#~**
 Movement, Fitness,
 Dance & Sports Lead;
 KS3/4 Lead; LSAs;
 Individual
 Timetables/Pathways
 & Destinations;
 CEIAG.
*Progress, Assessment,
 Data, Analysis & Impact*

**ISW Manager
Jen Adamski***
 Deputy DSL;
 Implementation
 of Individual
 Timetables/Path
 ways; BEST;
 Outreach.
*Progress,
 Assessment, Data,
 Analysis & Impact.*

Key

SLT Health Care Education Support Services

- *Mental Health First Aider
- # PBS Coach
- ~ Team Teach Tutor
- ^ Safeguarding trained
- @ Staff Governor Representative

Senior Leadership Team
 School Development Managers
 School Development Team

WHSS Structure 01.09.2022/23

OT
C Smith;
SaLT
H Clarke
Drama Therapists
J Cameron;
A McHugh
Family Therapist
K Webb
Family Support Practitioner Assistant
L Kershaw@
Music Therapists
A Shipley
N Richards
Dance Therapist
E Vaitulevicius*
Specialist Outreach Counsellor
J Ireland
Therapeutic Support Worker
Vacant

SRSCW (House Leader responsibility)
G Charlesworth#~
C Gregg

SRSCW
J McBurney
L Kelsey*
J Waterworth*
R Healey
D Cartner
T Forsyth^
M Hill*
T McGuinness*
H Bottomley

RSCW
D Ghani
M Eccleston
L Roberts
C Powles
T Driver
C Campbell
C Goodwin
J Boyd
B Traviss
Z Hepworth
B Moyers
T Patrick (Temp)

ISW Supervisors
C Boussaada*#
N Trew*# ~
R Amin*
M Obaydullah*
ISW's
C Coleman
K Fitzpatrick
A Pike
H Mellor
P Raud
M Audsley
S Robinson
C Singh* ^
S Spencer
S Merritt
M Jeng
T Gartland
H Shaw
S Boyle
K Binns
N Webster
G Holliday
C Banks-Klos
E Bell
D Regan
J Rowe
K Clarke
C Green*
B Millar
M Macauley
E Freeman

ISW cont.
C House
D James
A Thaxter
F Wall
J Boyce
T Kirbyson
K Lockwood
L McCamley
P Stewart
R Egege
P Clarke
A Rafiq
H Rushby
A Younas
E Clark
S Palmer
V Sewell
M Francois
D Lindsay
D Batterton
J Osborne
A Bond
H Boyle
L Greenwood
M Buckley
E Larkin
K McDonald
C Brown
J Riley
E Castledine
A Sarwar
H Hameti
S Simpson
E Bewick
L Hunt
J Rollins
S Swallow
S Mahmood
M Gregg
M Swaby
N Broad
H Tate
M Bailey
L Leeming

Teachers
A Carr*
(PSHE/SR(H)E Lead)
K Arey*#
(Arts lead; KS2/3)
H Illingworth
(Key Stage 1/2 Lead)
L Rowe
(Outdoor Ed Specialist)
M Bedford
(Primary Teacher)
L Presley
(Teacher EYFS and Key Stage 1 Phase)
S Roe
(Primary – Literacy Lead)
Adele Greenleaf
Brogan Wightman

BEST
C Marsay
D Wheldrick
S Dawson
L Carruthers
S Fawthrop

HLTA's
AM Lehmann,
W Marshall*
S Steele
LSA's
H Roberts
B Yates
J Pickford
S Godfrey
E Matthews
D Fitzpatrick
C Gilpin
E Matthews
A Jones
J Fitzpatrick

PA to SLT & Data Manager /Clerk to Governors - V Talbot
Head of Finance– S Childe
Payroll Manager – J Clegg
Head of HR – S Stewart
PA to SLT - A Beer

Head of IT A Godfrey
IT Assistant Vacant

Head of Premises
M Cartwright*
Head of Compliance/H&S
P Ackroyd
Premises staff
J West, L Harland
Gardener/Grounds
Maintenance
D Wilson
General Premises Assistant
A Turkaly
Painter & Decorator
J Javens
Waking Nights S Lewis
HR Assistant
E Boyle
Senior Admin Assistant
Tina Read
Admin Assistants
A Johnson; T Clarke,
H Moore
Trainee SBM
E Marshall
Finance Assistant
S Wynne

Catering Manager
Vacant
Cooks
N Dear; E Harling
Kitchen Assistant
W Lee

Housekeeping Supervisor
J Taylor
Housekeeping Assistants
L Barrett; B Yates

Cleaning Staff (contractors)

*Mental Health First Aider
#PBS Coach
~ Team Teach Tutor
^ Safeguarding trained
@ Staff Governor Representative

Key

Health Care Education Support Services

Agency (variable)