



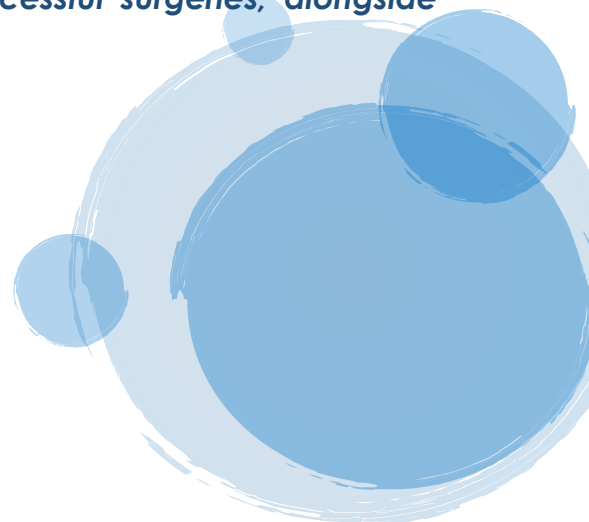
## SUMMER TERM 2023

### SEND SUPPORT

Available from the  
Specialist Provision Cluster  
Highbury, Wood Bank,  
Ravenscliffe and  
William Henry Smith Schools

*The Specialist Provision Cluster (SPC) has a track record in delivering a cohesive response to the needs of pupils in mainstream settings, through a range of approaches including planned specialist training and support. Since outreach work was established, we have engaged with almost 90% of Calderdale schools!*

*Our termly offer is devised through robust analysis of needs in schools, through feedback from clusters, partnership working with the LA school improvement service, and scrutiny of issues presented to our successful surgeries, alongside evaluation of advice and support provided.*





## YOUR PERSONAL DEVELOPMENT

### CPD OFFER TO SCHOOLS AND SETTINGS

*This offer has been put together to support SEND leaders and teachers as they strive to sustain high quality provision for pupils and students with the most complex needs. Our offer is designed to provide relevant training, bespoke support, and professional supervision (through mentoring and coaching) that will ensure provision for SEND pupils is appropriate, accessible, and impactful.*

*We are a **non-profit making** cluster of special schools working in partnership with the SEND services of the Local Authority. We have annual funding, allocated by the Partnership Board, to provide free or low-cost training, development, and support. This offer has therefore been developed to support all mainstream schools to make certain that SEND pupils achieve the best possible outcomes, through a well-designed, sequential, curriculum.*





## **CROSS PHASE (Primary and Secondary) SUPERVISION GROUPS**

### **PRIMARY AND SECONDARY SUPERVISION GROUPS**

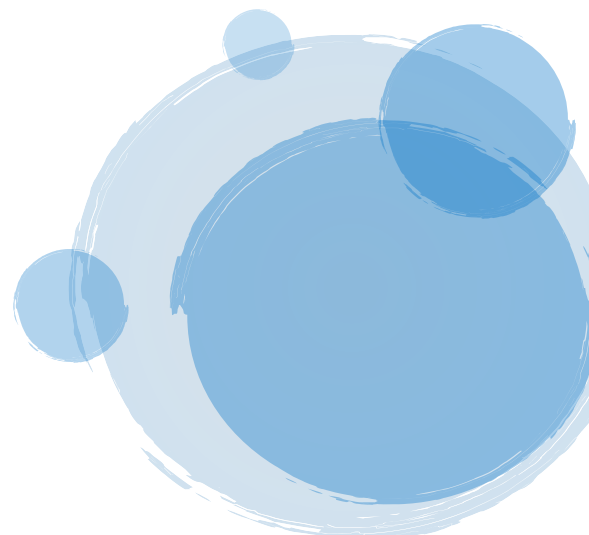
*This group will meet with a SPC leader/practitioner monthly, replicating a 'supervision' model where common issues and themes can be problem solved on a case-study basis to identify solutions and ways forward.*

**Primary supervision group meeting – Copley school, Wakefield Road Copley HX3 0TP  
Wednesday 19<sup>th</sup> April at 8:30**

Meetings take place on a monthly basis and provide ongoing support and advice through a supervision model.

**Secondary supervision group meeting – Ravenscliffe at the Spring Hall site HX3 OAQ –  
The next scheduled meetings are Thursday 4<sup>th</sup> May 2023 and Thursday 22<sup>nd</sup> June 2023**

**Please email [sarah.wynne@whsschool.org.uk](mailto:sarah.wynne@whsschool.org.uk) to be added to the current attendee list.**





## **CROSS PHASE (Primary and Secondary) EMOTIONAL & WELLBEING**

### **FREE BEHAVIOUR, EMOTIONAL AND MENTAL WELL-BEING SURGERIES**

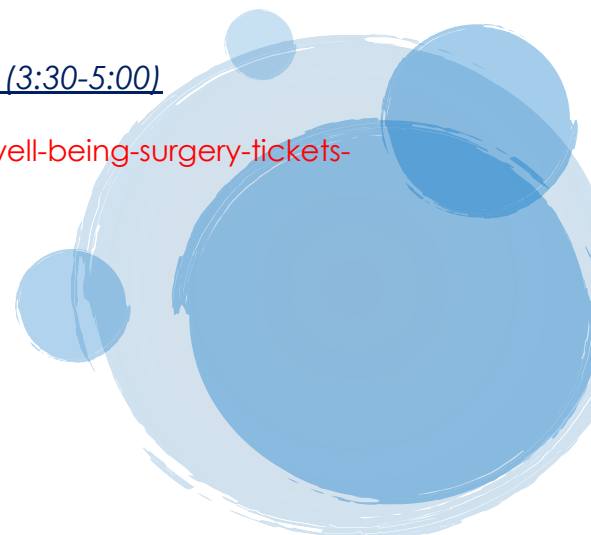
*A continuing opportunity for 1 representative from up to 3 schools to come together with 3 of our experienced specialists (mental health and behaviour practitioners and consultants) remotely via Zoom to share the details of some of their most challenging (or worrying) pupils, strengthen behaviour policies, and bounce ideas off each other. It is anticipated that schools will bring one case study each to share and provoke discussion around the suitability of strategies, support and intervention.*

*There will be opportunities for you to consider, and share, how the curriculum and the school's effective wider work support pupils to become confident, resilient and independent, and to develop strength of character. This will be key for those pupils for whom the pandemic triggers emergence emotionally of anxiety and or trauma (and possibly bereavement) in any pupil. These surgeries will ensure that there is no rapid erosion of mental health for the most vulnerable pupils and will reduce risk of exclusion*

**THESE SURGERIES ARE ALWAYS FULLY BOOKED SO EARLY RESERVATION IS ADVISABLE**

**Thursday 22<sup>nd</sup> June 2023 (3:30-5:00)**

**<https://www.eventbrite.co.uk/e/copy-of-behaviour-well-being-surgery-tickets-604951755987>**





# SEN SUPPORT STAFF PROGRAMME

## SIX SESSION PROGRAMME FOR SUPPORT STAFF

Following two successful deliveries of the Support Staff Programme this is being run again. An interactive training programme for primary or secondary classroom support staff and teaching assistants, that aims:

- To increase the knowledge and understanding around some of the most frequently encountered SEN needs.
- To consider what pedagogical strategies may be most effective in responding to children with SEN needs.
- To encourage a focus on responding to children and their needs, rather than a focus on understanding labels and diagnosis.
- To upskill and increase confidence in the support staff, in order to achieve improved outcomes for the children they are working with.
- To ensure that these support staff understand their role in providing an education for children with SEN that is 'appropriate to their needs, promotes high standards and the fulfilment of potential'.
- This programme is led by Rezina Kelly and is a repeat of the highly successful programme that started in Spring 2021 and was attended by 26 secondary teaching assistants, from whom feedback has been phenomenal.

**Session 1 Wednesday 08.02.23- 9am-10am**

**Session 2 Wednesday 08.03.23- 9am-10am**

**Session 3 Wednesday 19.04.23- 9am-10am**

**Session 4 Wednesday 17.05.23- 9am-10am**

**Session 5 Wednesday 14.06.23- 9am-10am**

**Session 6 Wednesday 12.07.23- 9am-10am**

*This course is now SOLD OUT; However, we will be starting a new program in the Autumn 2023 offer*



## FREE CONSULTATIONS

### THE SPECIALIST PROVISION CLUSTER ALSO PROVIDES A CONSULTATION SERVICE FOR PRIMARY AND SECONDARY SCHOOLS

We recognise that our surgeries have limited places available and that issues do not arise in school "on a timetable" so it may not be possible to prevent issues escalating. Schools are currently without any wider behavior support service so if you are not sure what you need then contact and we can send you a referral form to complete and advise on the best solution.

We cannot offer an IMMEDIATE service as our leaders and teachers are school based, meeting the needs of their own students across the cluster.

#### **Free services we offer**

Behavior surgeries (WHSS) – please see previous information for more detail.

Supervision sessions (secondary held by Ravenscliffe, Primary held by Highbury) – please see previous information for more detail.

Good practice visits where we can organize for you to visit one of the special schools.

Virtual consultation (approx. 1 hour) max 2 consultations per term

#### **Chargeable services**

Half day support/advice - £200 based on 1 consultant.

Full day support/advice - £400 based on 1 consultant.

Staff training/Twilights/INSET - £125 per hour.

Bespoke Training/ External commissioned - Quotation on request

To request a consultation please email: [Sarah.wynne@whsschool.org.uk](mailto:Sarah.wynne@whsschool.org.uk)



## SEND/ BEHAVIOUR AUDIT

Conducted by colleagues in the SPC Cluster, these will offer outstanding support, guidance and advice that enables you to construct high quality action plans. This service includes scrutiny of evidence, one day in your school and a written report including feedback to your setting, complete with recommended action points. SEND audits will ensure that provision for SEND pupils is personalised and can be evidence through improved, robust assessment.

## BEHAVIOUR REVIEW

Conducted by colleagues in the SPC Cluster, the overall aim of behaviour support reviews is to improve the quality of support offered to children by improving the knowledge and understanding of staff to enable them to provide the right support for a child, at the right time. This service includes scrutiny of evidence, one day in your school and verbal recommendations.

**SEND/Behaviour audit - £620**

**Behavioural review £500**

For further information please email [sarah.wynne@whsschool.org.uk](mailto:sarah.wynne@whsschool.org.uk)



# MAKATON TRAINING

## WHAT IS MAKATON?

**A unique language programme which may be used as  
A systematic multi-modal approach for the teaching of;**

- communication skills
- language skills
- literacy skills
- Makaton supports everyday basic communication.
- Facilitates social interaction, helping to build positive relationships.
- A source of highly functional vocabulary
- Develops language.
- A source of highly functional vocabulary for the person with communication needs and their interactive partners.

**The William Henry Smith school has a licensed Tutor and offering Levels 1-4. This is offered through the SPC Cluster Offer.** The price is available on request and will include a Participant's Manual. This includes the Makaton symbols and signs that you learn in the workshop. You will also be given a certificate of attendance.

**Level 1** training is the starting point for learning Makaton. It is recommended for anyone who has an interest in early communication skills, needs to use Makaton at home or within in their work setting, those who need a more detailed knowledge about using and applying Makaton to develop the communication skills of others.

**Level 2** training builds on the knowledge you gained in Level 1 training. You will learn the signs and symbols from Stages 3 and 4, and the rest of the additional stage, of the core vocabulary.

**Level 3** You will revise the signs and symbols you learned in your Level 1 and 2 training and learn the signs and symbols for stages 5 and 6 of the core vocabulary. After completing Level 3 training, you can complete your understanding of the core vocabulary by attending a Level 4 workshop.

**Level 4** You will revise the signs and symbols you learned in your Level 1, 2 and 3 training and learn the signs and symbols for stages 7 and 8 of the core vocabulary. After completing Level 4 training, you may be interested in attending one of our specialist workshops.

**For further information please email [sarah.wynne@whsschool.org.uk](mailto:sarah.wynne@whsschool.org.uk)**





## TWILIGHT SESSIONS

### USING A TOTAL COMMUNICATION APPROACH

Aimed at students operating at Early Years and KS1 level who require support with their communication. Delivered by Zoe Pardoe.

23<sup>rd</sup> May 2023

4:00pm-5:30pm

Ravenscliffe Close, Skircoat Green HX3 0RZ

---

### MEETING THE SENSORY NEEDS OF A STUDENT WITH AUTISM

Aimed at those working with students on the autistic spectrum at any age.  
Delivered by Daniel Pardoe

9<sup>th</sup> May 2023

4:00pm-5:30pm

Ravenscliffe Close, Skircoat Green HX3 0RZ

---

### WRITING EFFECTIVE EHC OUTCOMES AND STEPS TO ACHIEVE

The training will focus on using assessment information and knowledge of pupil needs to write effective EHC outcomes and steps to achieve. Delegates will learn how to use techniques such as backward chaining to plan an effective sequence of learning.

8<sup>th</sup> June and 15<sup>th</sup> June 2023

4:00pm-5:30pm

Highbury school, Lower Edge road, Brighouse, HD6 3LD

---



## TWILIGHT SESSIONS CONT...

### POSITIVE BEHAVIOUR SUPPORT

Positive behaviour support is unlike traditional behaviour management methods used, the focus is not on 'fixing' the person or on the behaviour of concern itself and never uses punishment as a strategy for dealing with such behaviours. Positive behaviour support is based upon the principle that if you can teach someone a more effective and more acceptable behaviour than the concerning one, the concerning behaviour will reduce.

During this presentation we will cover topics such as:

- Quality of life and its involvement in PBS
- Understanding behaviours and why they occur
- Meaningful development learning opportunities
- Acknowledging that punishment is not conducive to rehabilitation.
- Our own responses matter.
- Functions of behaviour
- Proactive positive behaviour support plans

**16<sup>th</sup> May 2023**

**4:30-5:30pm**

**William Henry Smith school, Boothroyd lane, Brighouse, HD6 3JW**

**For further information please email [sarah.wynne@whsschool.org.uk](mailto:sarah.wynne@whsschool.org.uk)**



## INDUCTION TRAINING

### 4 SESSION INDUCTION TRAINING FOR SUPPORT STAFF

Highbury School are offering a number of training opportunities which may be relevant for your SEND support staff or new to role support staff.

**Introduction to positive behaviour management strategies in the classroom Session 1 (with gap task to session 2) and Behaviour session 2 with gap task from session 1 delivered by Sarah Nelson (Deputy Head & Behaviour Lead at Highbury Specialist School)** will address why children display challenging behaviours in the classroom, the communication behind the behaviours and what strategies staff and schools can put in place to ensure pupils are more successful.

**The importance of play in securing engagement and developing relationships is delivered by Pippa Miller a qualified Play Therapist and Social Worker** currently working in mainstream and Special schools in Calderdale directly supporting children and families. Pippa will look at the role play and relationships have in the classroom and how these fundamentals support our children to feel safe, secure and thrive.

**Supporting sensory integration needs in the classroom (wave 1) delivered by Vicky Altham (Lead Practitioner for Sensory Integration at Highbury School)** will highlight how simple adaptations to the classroom environment, resourcing and timetable can have huge impacts for pupils with sensory processing needs or sensory sensitivities.

1. Tuesday 31<sup>st</sup> January 2023 1.30pm – 3pm  
Supporting sensory integration needs in the classroom (wave 1)
2. Wednesday 1<sup>st</sup> February 2023 1.30pm – 3pm  
Introduction to positive behaviour management strategies in the classroom Session 1 (with gap task to session 2)
3. Thursday 2<sup>nd</sup> February 2023 1.30pm – 3pm  
The importance of play in securing engagement and developing relationships
4. Friday 3<sup>rd</sup> February 2023 1.30pm – 3pm  
Behaviour session 2 with gap task from session 1

**Please Note this is now SOLD OUT – if you would be interested in staff attending the Induction Training in the future please email: [Sarah.wynne@whsschool.org.uk](mailto:Sarah.wynne@whsschool.org.uk)**



# TEAM TEACH

## Team Teach – Foundation Level

Aimed at low-risk Service Settings (Mainstream Primary/Secondary Schools, Nurseries, Children's Hospitals, Elderly Care etc.), this course covers personal safety, risk reduction strategies, positive handling, together with documentation and legal guidance.

**This is organised into 8 modules: -**

**Module 1** – Background to Team Teach

**Module 2** – The Legal Framework

**Module 3** – Understanding Aggression

**Module 4** – How Feelings Drive Behaviors

**Module 5** – De-escalation and Diffusion

**Module 6** – Personal Safety

**Module 7** – Positive Handling (Mainly guiding and escorting safety – if a great degree of holding is required, please refer to the 12-hour Basic Course)

**Module 8** – Repair, Reflection and Review

Participants will receive a course workbook and certificate. Certification of this course is valid for 3 years.

**This training is delivered in 6 hours (full day session which is at an external venue) at a cost of £110 per person. (Lunch is provided at training held by WHSS – dates available on request. It can also be delivered in your setting in either a full day or Twilight sessions to the following numbers of staff: -**

<b>Maximum of 12 delegates – 6-hour session</b>	<b>£999 (1 trainer)</b>
<b>Maximum of 24 delegates – 6-hour session</b>	<b>£1399 (2 trainers)</b>

For enquiries and bookings please contact [Holly.moore@whsschool.org.uk](mailto:Holly.moore@whsschool.org.uk)



## THE BEST PRACTICE CLASSROOM

### **BEST PRACTICE CAN BE DELIVERED IN OUR CLASSROOMS AND OUTDOOR SPACES**

*All the Special Schools would be happy to invite SENCOs and colleagues to visit their schools, and see some of the strategies, resources and layouts they use within their classrooms. Please contact schools individually to arrange a visit, either during or outside of school hours, and to discuss your specific needs so that the visit can respond to areas of interest or learning needs.*

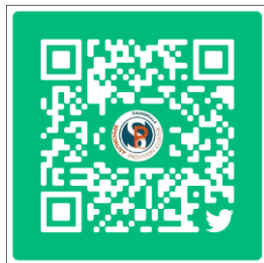




## NEW SOCIAL MEDIA LINKS

**WE APPRECIATE YOUR FEEDBACK AND IT ALSO HELPS US INFORM FUTURE TRAINING.**

For our Twitter account please visit SPC Calderdale  
@calderdalespc. Please see the QR Code below



To visit our Facebook page, go to Calderdale SPC link  
<https://www.facebook.com/profile.php?id=100086657022707>

